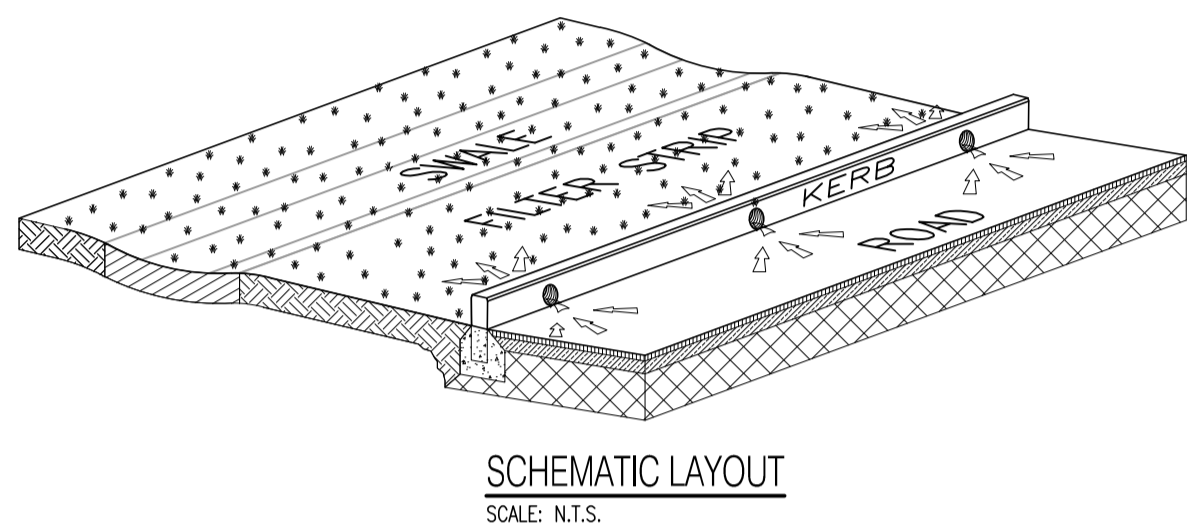
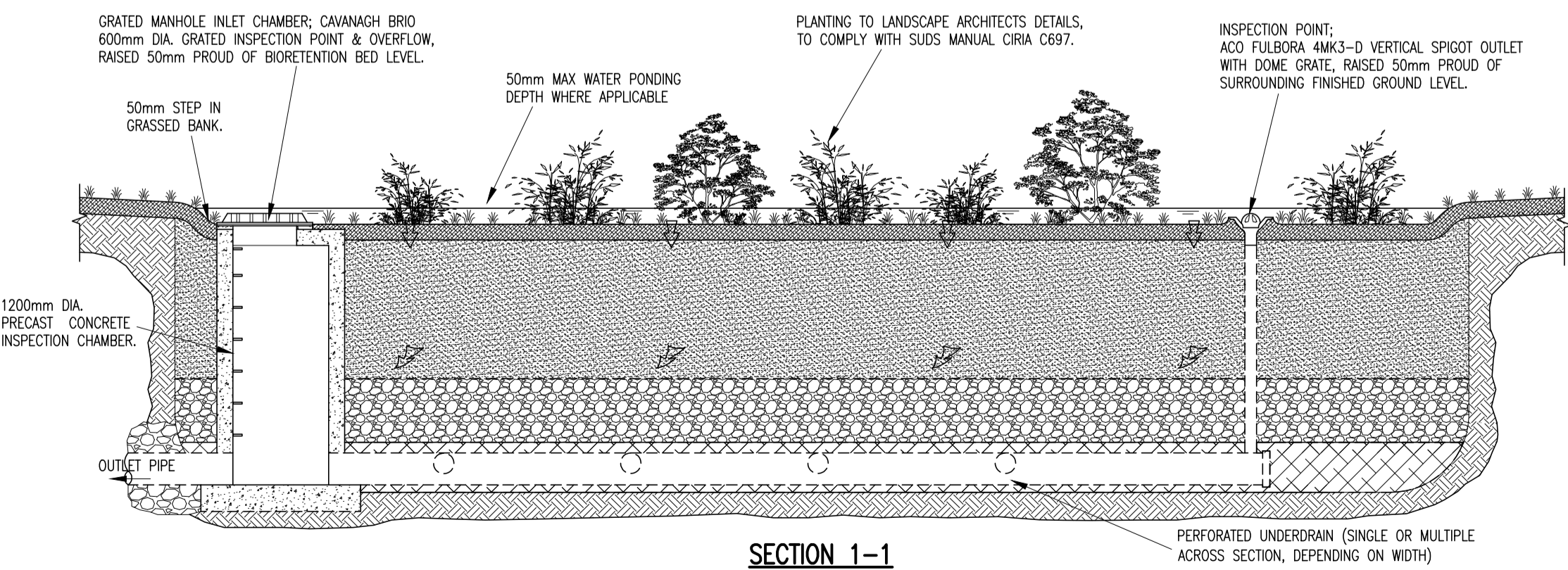
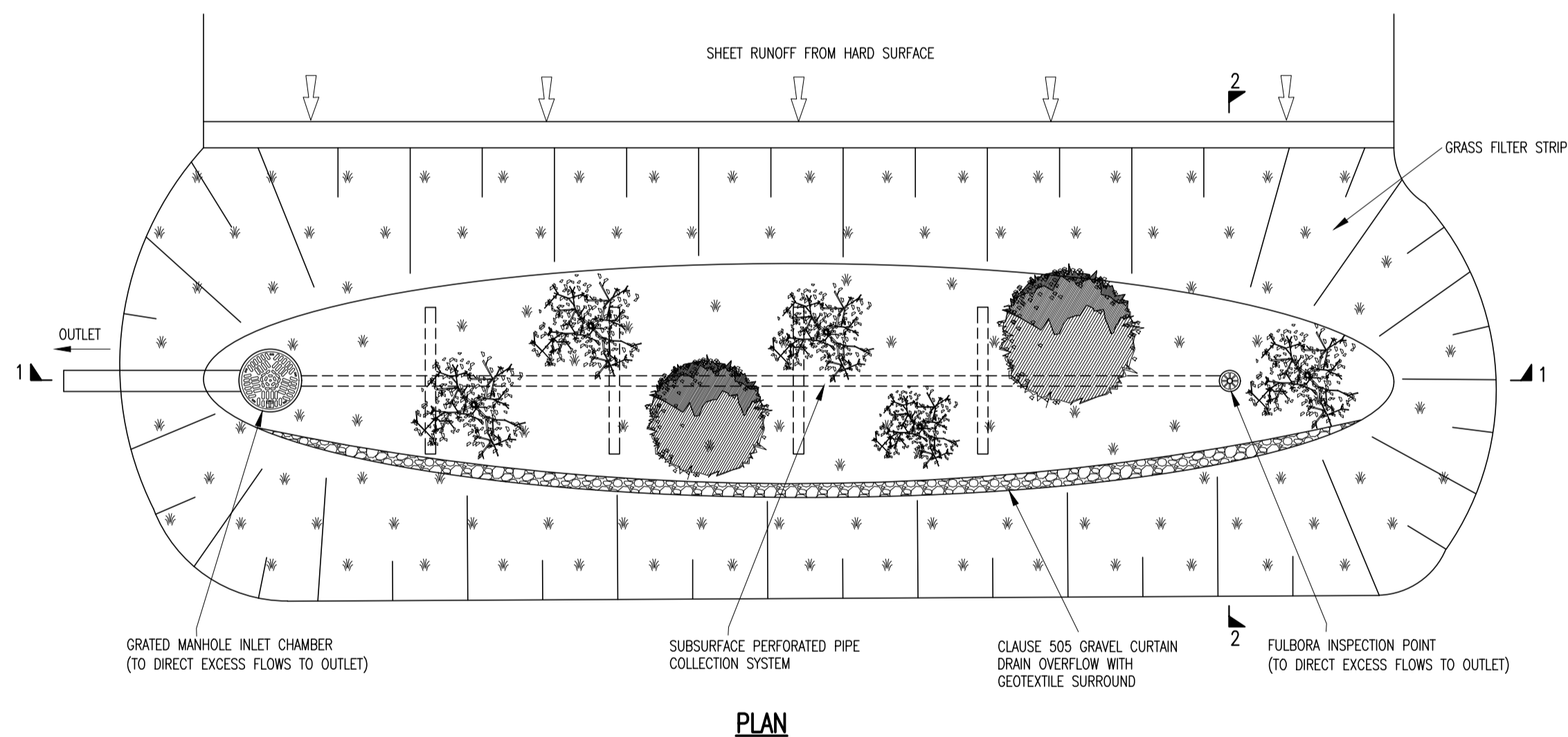


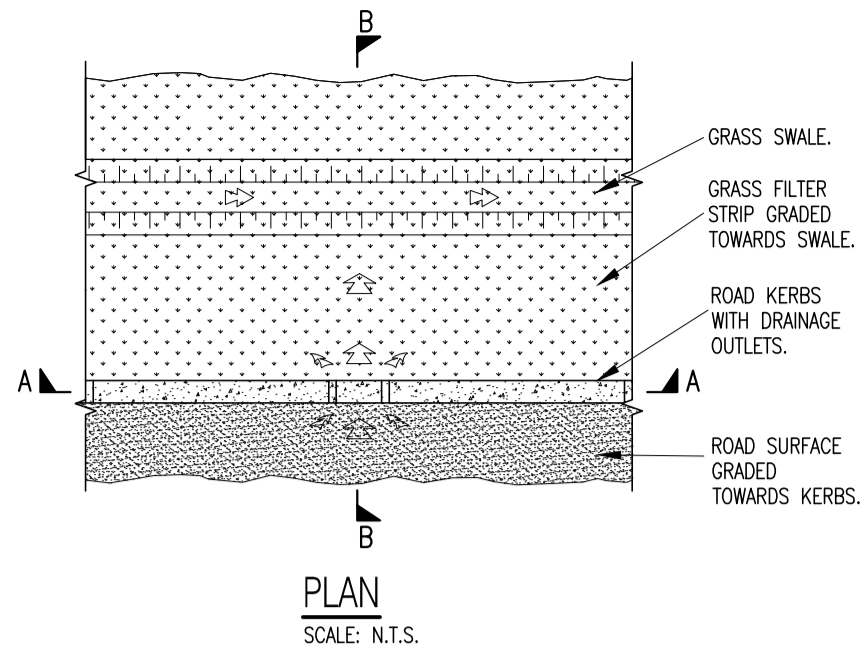
TYPICAL ROADSIDE LATERAL KERB INLET (NON-CONTINUOUS KERB)



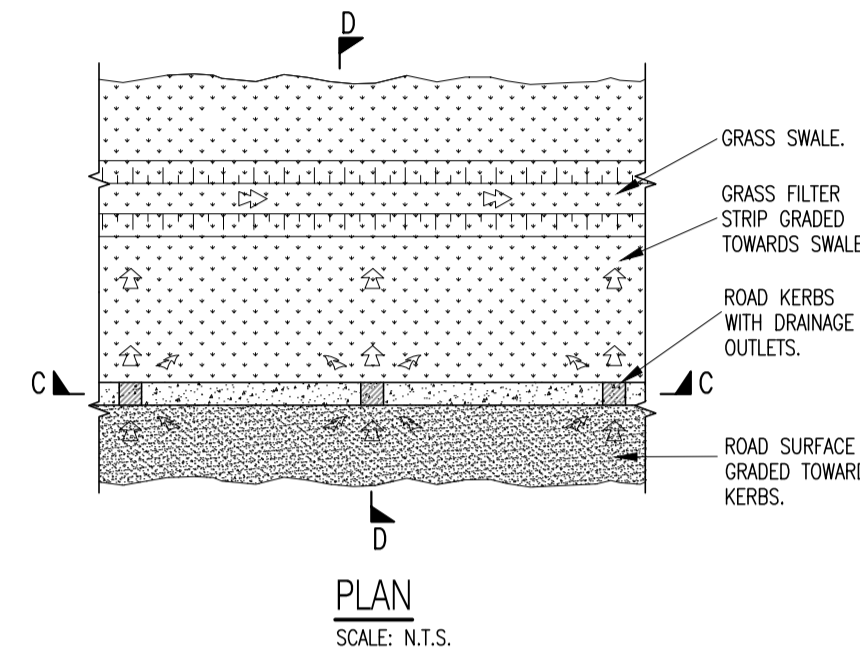
TYPICAL ROADSIDE LATERAL KERB INLET (KERB WITH PIPE OUTLETS)



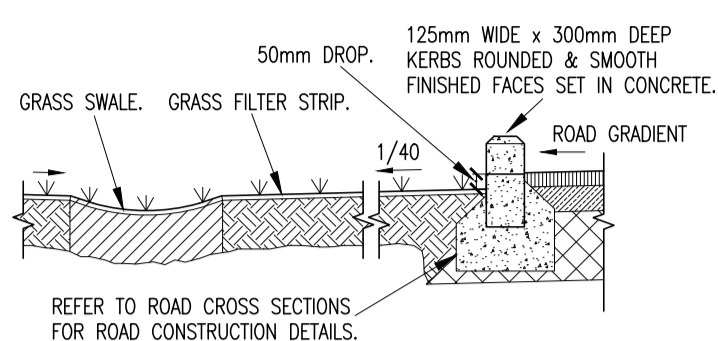
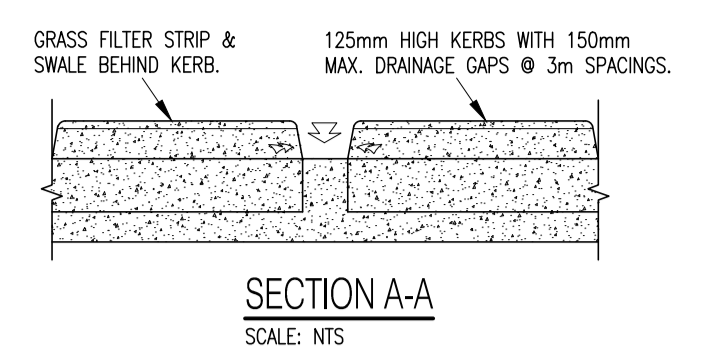
BIORETENTION AREA/RAIN GARDEN' - SCHEMATIC LAYOUT



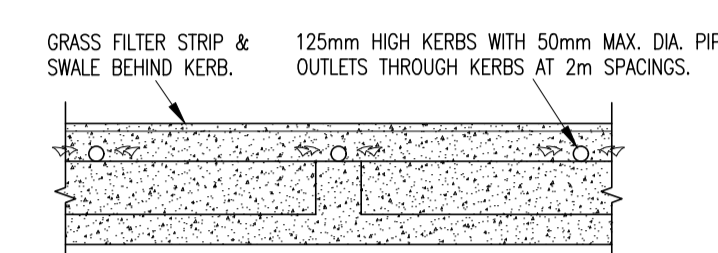
PLAN



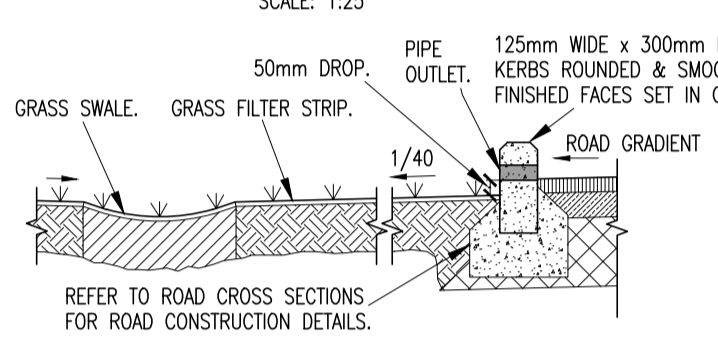
PLAN



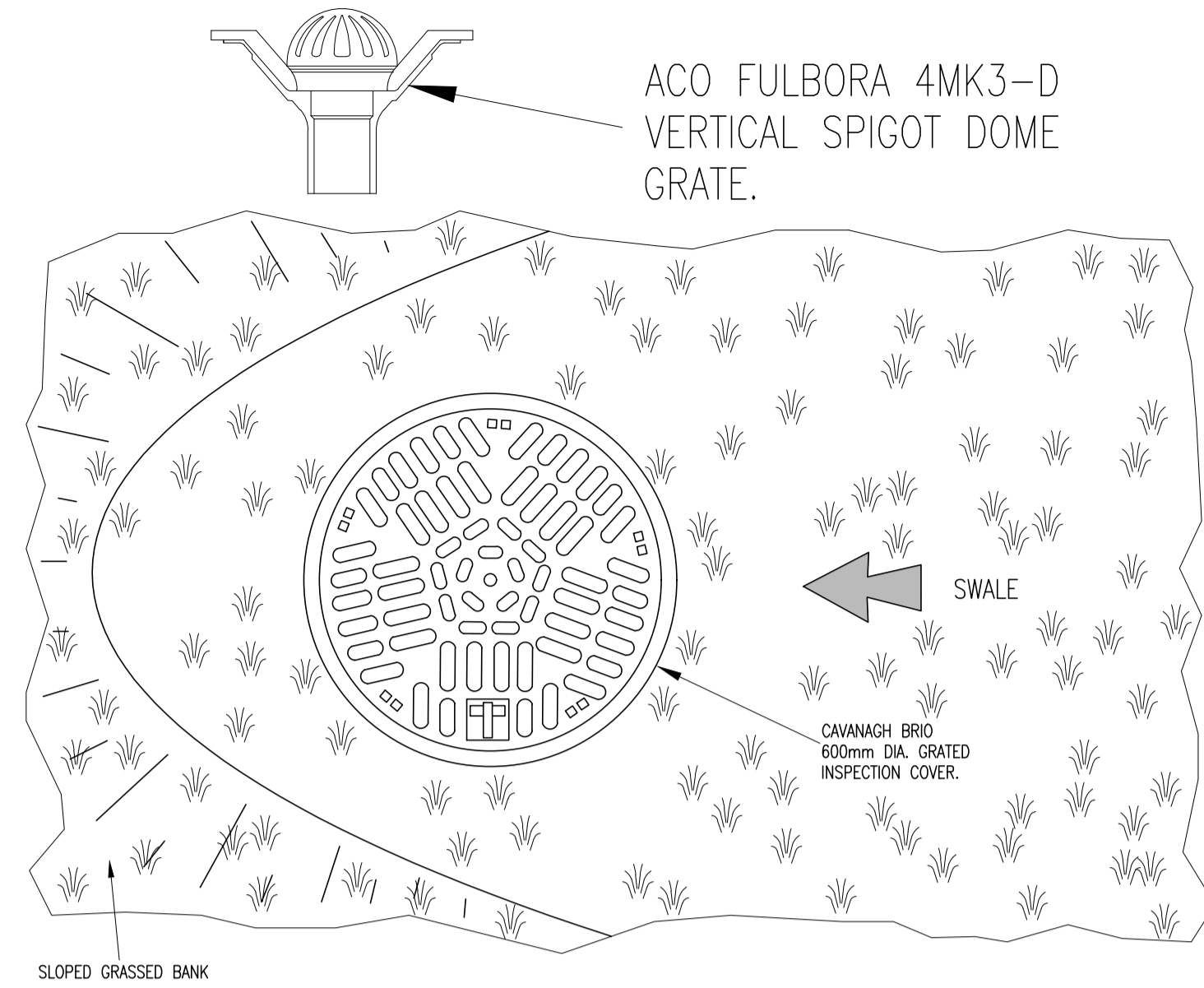
SECTION B-B



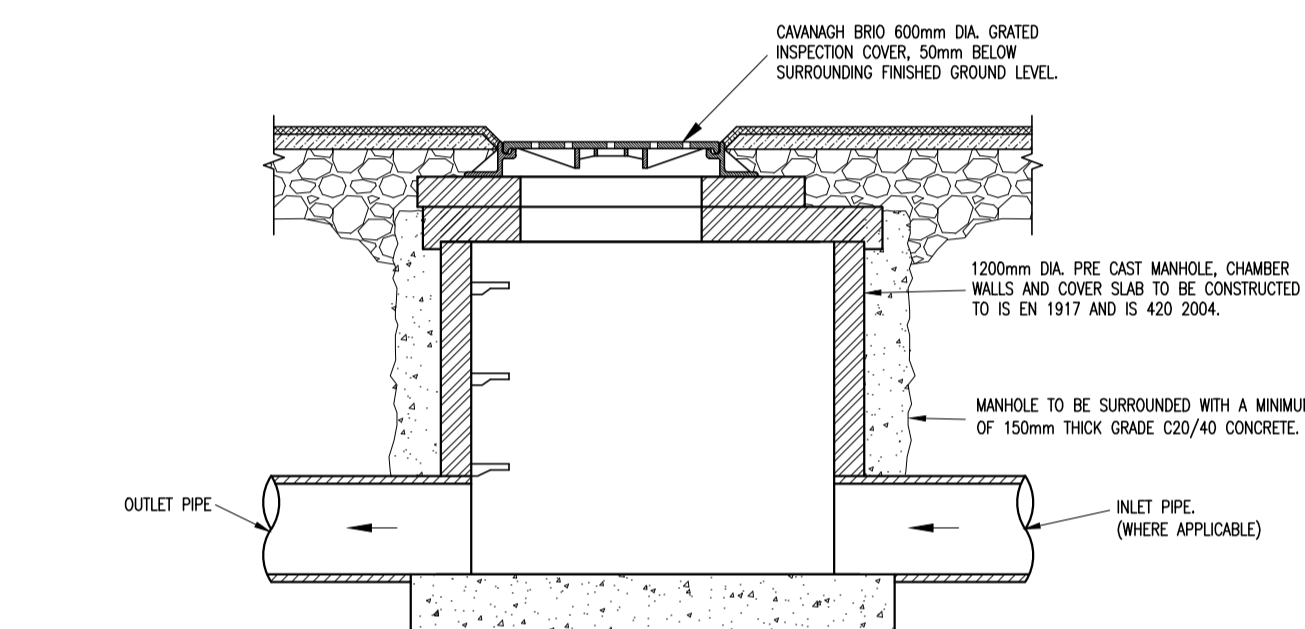
SECTION C-C



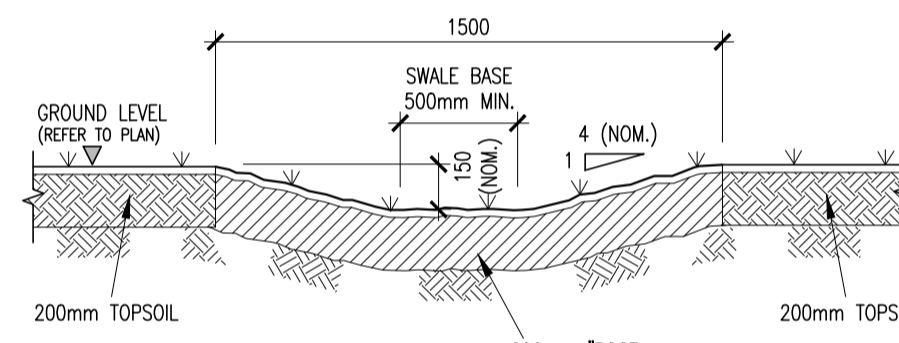
SECTION D-D



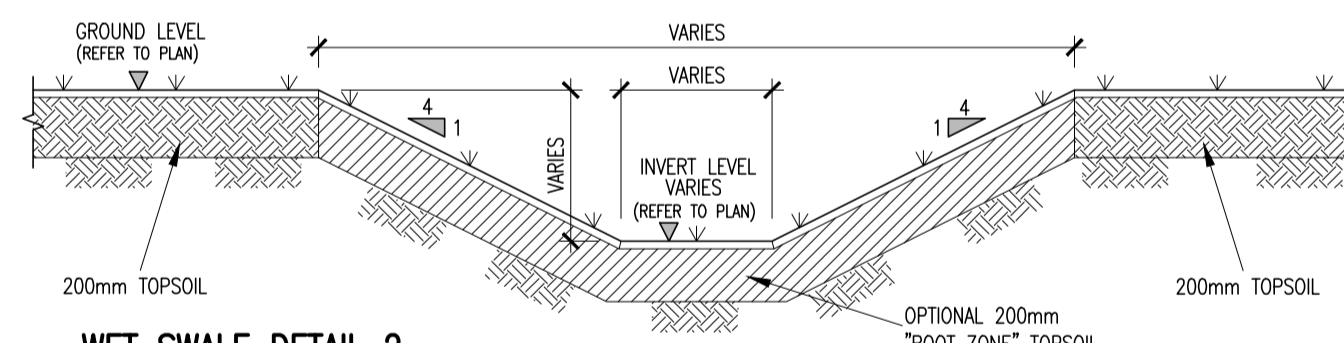
GRATED MANHOLE PLAN



GRATED MANHOLE INLET CHAMBER - CROSS-SECTION



WET SWALE DETAIL 1



WET SWALE DETAIL 2

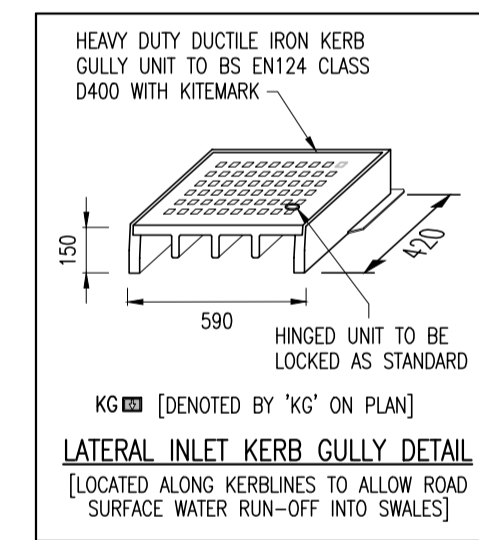
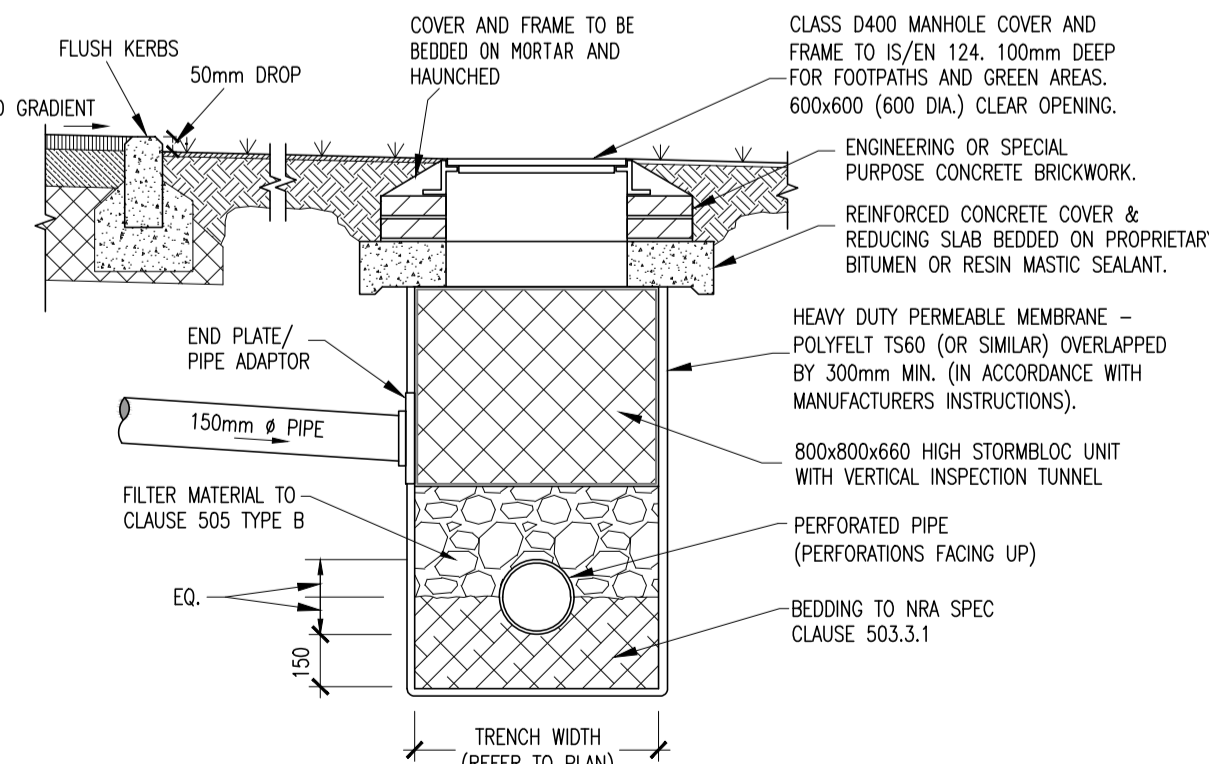
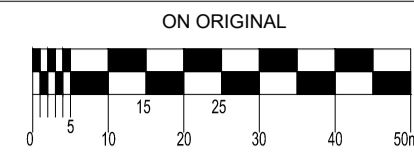


TABLE 1	
COMPONENT	PERCENTAGE MIXTURE
SAND	35-60%
SILT	30-50%
CLAY	10-25%
ORGANIC MATTER	0-4%
TOP SOIL	-



GULLY CONNECTION TO FILTER DRAIN

© COPYRIGHT OF THIS DRAWING IS RESERVED BY DBFL CONSULTING ENGINEERS. NO PART SHALL BE REPRODUCED OR TRANSMITTED WITHOUT THEIR WRITTEN PERMISSION.



NOTES:

- WHERE ROCKS OR OTHER HARD TRENCH BOTTOM IS ENCOUNTERED, THE FIGURE DENOTED BY \* IS TO BE DOUBLED.
- TYPE 1 GRANULAR MATERIAL : BROKEN STONE OR GRAVEL TO PASS 10mm SIEVE AND BE RETAINED ON 5mm SIEVE.
- TYPE 2 GRANULAR MATERIAL : BROKEN STONE OR GRAVEL TO PASS 10mm - 25mm SIEVE, ACCORDING TO PIPE SIZE, (SEE TABLE) AND BE RETAINED ON 5mm SIEVE.
- CLAUSE 601 S.R.W. BACKFILL : UNIFORM READILY COMPACTED MATERIAL FREE FROM TREE ROOTS, VEGETABLE MATTER, BUILDING DEBRIS, AND FROZEN SOL AND EXCLUDING CLAY LUMPS RETAINED ON A 75mm SIEVE AND STONES RETAINED ON A 37.5mm SIEVE.
- RIGID PIPES SHALL MEAN CAST OR SPUN IRON, CONCRETE OR CLAY.
- GULLY GRATINGS AND FRAMES SHALL COMPLY WITH THE REQUIREMENTS OF I.S./E.N/124 1994. GULLIES SHALL BE CLASS D400.
- GULLY WALLS SHALL BE CONSTRUCTED IN CLASS 30N/mm<sup>2</sup> PRECAST OR INSITU CONCRETE OR ALTERNATIVELY IN SOLID CONCRETE BLOCKS DESIGNATED S10, STRENGTH 10N/mm<sup>2</sup>
- ALL PIPES TO BE BEDDED IN ACCORDANCE WITH MANUFACTURERS RECOMMENDATIONS
- SURFACE WATER SEWERS TO BE CLASS H CONCRETE TO IS EN1916 AND IS 6 2004.
- FOUL SEWERS TO BE uPVC PIPES TO COMPLY WITH THE 'PROVISIONAL SPECIFICATIONS FOR SOIL PIPES, DRAINS, SEWERS AND FITTINGS MADE OF UNPLASTICISED P.V.C.', ISSUED BY THE DEPARTMENT OF THE ENVIRONMENT AND THE GRATER DUBLIN REGIONAL CODE OF PRACTICE FOR DRAINAGE WORKS V6.0.

P02	10/12/21	STAGE 3 SHD PLANNING	GMC	BCM
P01	07-04-21	STAGE 2 SHD PLANNING	GMC	DMW
rev	date	description	by	chkd.

client approval	A - Approved	B - Approved with comments	C - Do not use
-----------------	--------------	----------------------------	----------------

suitability	STAGE 2 SHD PLANNING
-------------	----------------------

DBFL Consulting Engineers	Civil, Structural & Transportation Engineering	www.dbfl.ie
---------------------------	--	-------------

DUBLIN OFFICE: Ormond House, Upper Ormond Quay, Dublin 7, D07 W704 PHONE: +353 1 480 4000	CORK OFFICE: Phoenix House, Monahan Road, Cork, T12 H1XV PHONE: +353 (0) 21 224638	WATERFORD OFFICE: Suite 8b The Arkum, Marlboro Gate, Canada Street, Waterford, X91 W028 PHONE: +353 51 908 500
--	---	---

project ref.	RESIDENTIAL DEVELOPMENT HOLLYSTOWN
--------------	------------------------------------

drawing title	TYPICAL DRAINAGE CONSTRUCTION DETAILS SHEET 3
---------------	---

client	GLENVEAGH HOMES LIMITED
--------	-------------------------

designed by	author	scale	sheet size
DMW	GMC	AS SHOWN	A1
drawing no.	170182-DBFL-CS-SP-DR-C-5303	revision	P02